

Case Study

The Royal Hospital for Neuro-Disability, Putney, London



The Royal Hospital for Neuro-disability is a 'not-for-profit' medical charity, founded in 1854 and incorporated by Royal Charter in 1919 and seeks, through the provision of specialist services and research, to meet the needs of people with complex neurological disabilities resulting from damage to the brain or nervous system.

The Project :

Philip Palethorpe, the hospital's Facilities Director, explains "I needed to gather a team of specialist designers, engineers suppliers and contractors to provide an innovative, and sensitive solution to the refurbishment of one brain injury ward, and one long stay ward. After extensive and careful selection, this was achieved and I feel the results fully justify this initial effort".

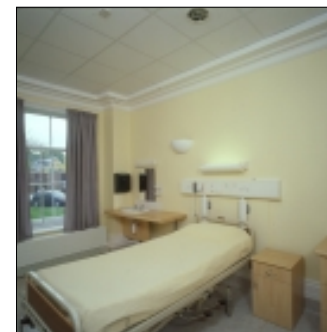
The Lighting Requirements :

The designs for the refurbishment of these two wards were produced by Architects, David Cowan Associates. David Cowan himself led the project, supported in the crucial aspects of technical design by Building Services Consulting Engineers Martin Clowes Associates.

David Cowan explains "The ethos of this project was the creation of single occupancy rooms from the existing large-scale Victorian wards. The provision of sympathetic personal space, giving comfort for people in long-term care, was the main consideration. It was important to give patients as much control as possible over their own environment. We chose **ROTALUX** BedLights, not only because the manufacturers could co-ordinate with the Nurse-Call suppliers to provide switch-dim control through the nurse-call handset, but also because these well engineered luminaires incorporated both rotational and demountable features".

Trevor Ford, Senior Electrical Engineer with MCA, supports the Team's choice of **ROTALUX** - "Not only did these fittings provide superb flexibility in light distribution and maintenance, but they saved money against traditional solutions of bedhead trunking-mounted systems. They look good too!"

ROTALUX products are designed and manufactured at Martlesham Heath, Suffolk by Light Years Ahead Ltd.





ROTALUX

**The Royal Hospital for
Neuro-Disability,
Putney, London**





ROTALUX

The Royal Hospital for Neuro-Disability, Putney, London

*Single-Bed Room lit by ROTALUX
BedLight controlled by Despro-Mediplan
nurse-call handset*





ROTALUX

The Royal Hospital for Neuro-Disability, Putney, London

*Single-Bed Room lit by ROTALUX
BedLight controlled by Despro-Mediplan
nurse-call handset*

