



WARNING: Do not power up fitting until all work is completed and wired correctly by a qualified electrician.

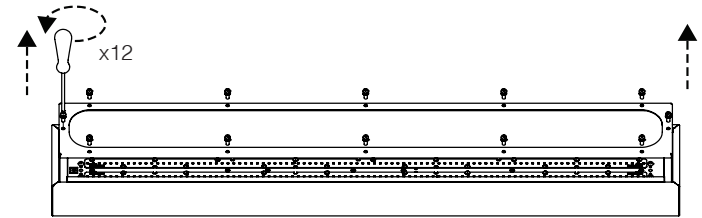
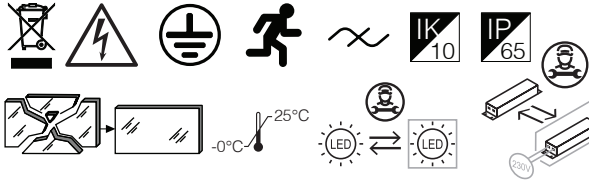
ALL ELECTRONIC COMPONENTS TO BE REPLACED BY THE MANUFACTURER OR AGENT.

INSTRUCTION SHEET - SHOULD BE RETAINED BY THE END USER

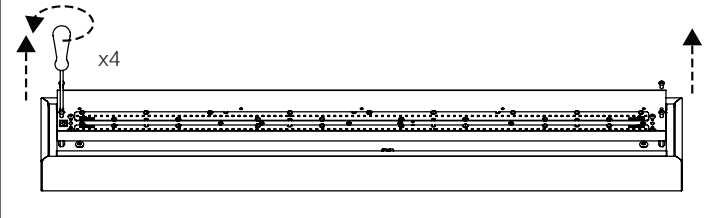


PROTECTALUX T 1250

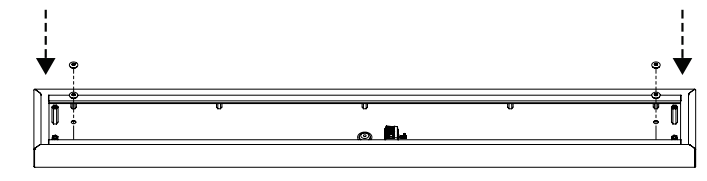
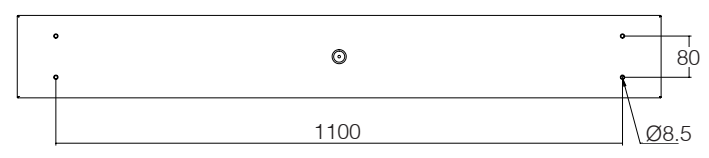
PRT-1250-ML-CW	PRT-1250-ML-CW-EP	PRT-1250-ML-CW-DA	PRT-1250-ML-CW-DA-EP
PRT-1250-LO-CW	PRT-1250-LO-CW-EP	PRT-1250-LO-CW-DA	PRT-1250-LO-CW-DA-EP
PRT-1250-HE-CW	PRT-1250-HE-CW-EP	PRT-1250-HE-CW-DA	PRT-1250-HE-CW-DA-EP
PRT-1250-NM-CW	PRT-1250-NM-CW-EP	PRT-1250-NM-CW-DA	PRT-1250-NM-CW-DA-EP
PRT-1250-HO-CW	PRT-1250-HO-CW-EP	PRT-1250-HO-CW-DA	PRT-1250-HO-CW-DA-EP
PRT-1250-MX-CW	PRT-1250-MX-CW-EP	PRT-1250-MX-CW-DA	PRT-1250-MX-CW-DA-EP
PRT-1250-ML-WW	PRT-1250-ML-WW-EP	PRT-1250-ML-WW-DA	PRT-1250-ML-WW-DA-EP
PRT-1250-LO-WW	PRT-1250-LO-WW-EP	PRT-1250-LO-WW-DA	PRT-1250-LO-WW-DA-EP
PRT-1250-HE-WW	PRT-1250-HE-WW-EP	PRT-1250-HE-WW-DA	PRT-1250-HE-WW-DA-EP
PRT-1250-NM-WW	PRT-1250-NM-WW-EP	PRT-1250-NM-WW-DA	PRT-1250-NM-WW-DA-EP
PRT-1250-HO-WW	PRT-1250-HO-WW-EP	PRT-1250-HO-WW-DA	PRT-1250-HO-WW-DA-EP
PRT-1250-MX-WW	PRT-1250-MX-WW-EP	PRT-1250-MX-WW-DA	PRT-1250-MX-WW-DA-EP



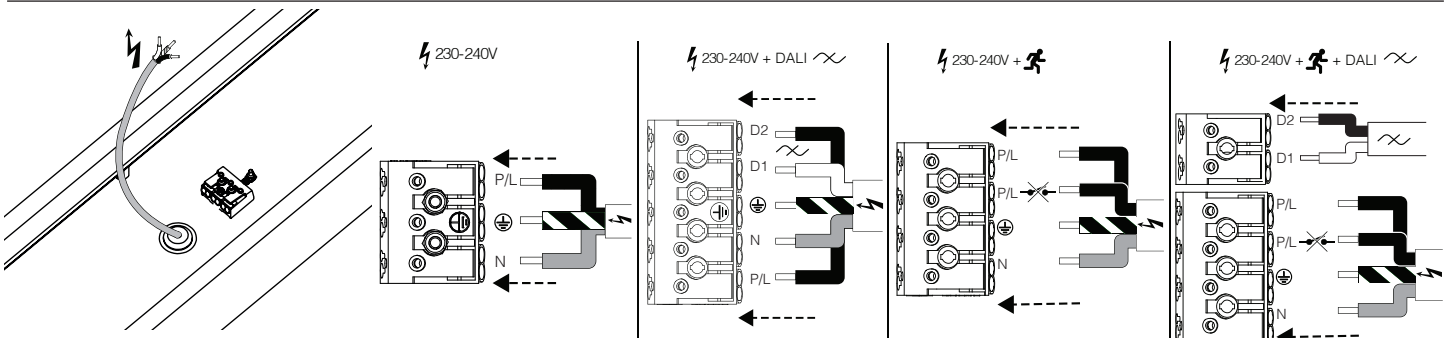
1) Unscrew and remove lens, setting aside M6 x 16 screws and washers



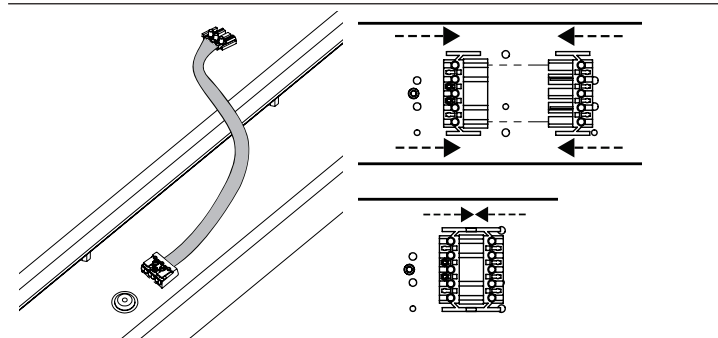
2) Unscrew and remove geartray, setting aside M6 x 12 screws



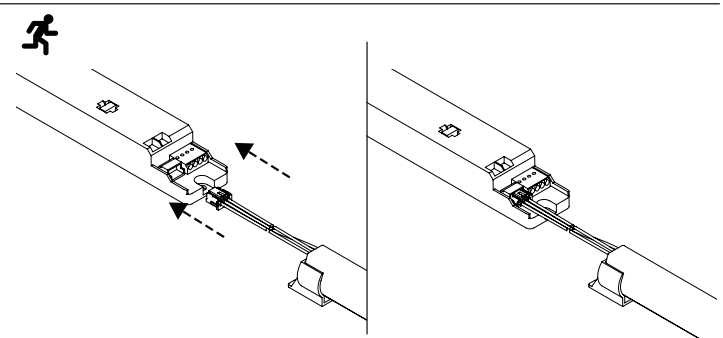
3) Drill fixing holes into ceiling and screw into place. Use x4 M6 bonded washers supplied to ensure IP seal.



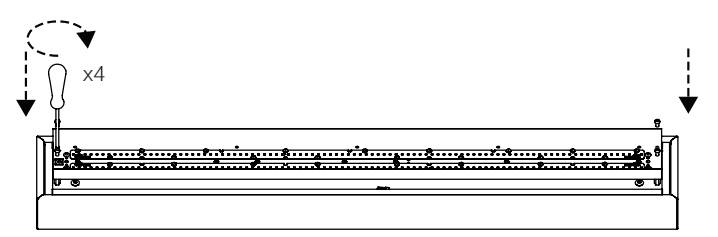
4) Wire power cable into terminal block. Max Ø1.8mm gauge



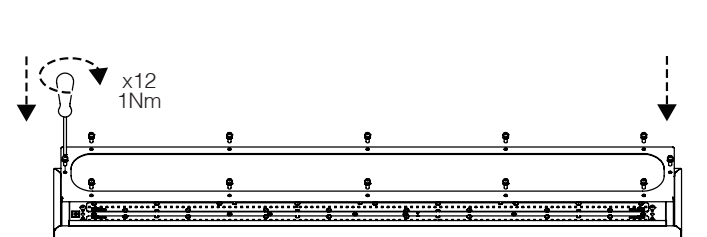
5) Connect flying lead from body into geartray.



6) Connect Emergency Battery to EM Converter



7) Place Geartray into body and screw into place with M6 x 12 screws



8) Screw Lens to Body with M6 x 16 screws and washers