

UK MANUFACTURED



Custodial Specialist Lighting Solutions

British Manufacturer of Ministry of Justice Approved Specialist Anti-Ligature, High-Impact & Vandal-Resistant Luminaires



LIGHT YEARS **AHEAD**

Working With Us

Light Years Ahead has been supplying specialist lighting solutions for the most demanding applications since 1997, becoming part of the wider Daro Group in 2017. Being within the Group brings benefits from a range of resources and symbiotic relationships for the benefit of organisations that we work with.

Working with us, you can be assured that we wholeheartedly listen to and understand your exact needs. Once we review your brief we're able to utilise our expertise to design, manufacture and deliver best-in-class products that match your budget.

Customer relationship is at the heart of everything we do. We target 100% on-time delivery, every time. We're able to achieve this by having robust, short supply chains and precise stock management. We aim to work to minimal lead times and typically deliver within weeks of receiving an order.



trusted and agile

Part of Daro Group



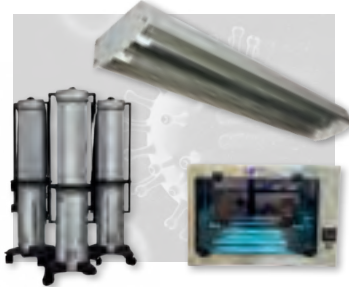


Daro Group's central business and manufacturing resources bring a full suite of support services, enabling the companies within the group to focus on delivering their core areas of expertise; allowing them and their customers to thrive.

Comprising of three production sites and over 50 staff, the combined strength of the group allows us to deliver on our core value: **You win, we win.**



Advanced UVC disinfection solutions for air, surfaces, and equipment to reduce infection risks in various sectors.



Providing high-performance UV light equipment to support safe, reliable, and effective workplace operations.



UV solutions for chemical-free water treatment across domestic, commercial and industrial sectors.



Engineering precision and manufacturing excellence across a diverse range of industries.



Water conservation with smart devices, including water leak detection & flow control products.



Technical Features

Throughout this brochure there are technical terms that Light Years Ahead use to define product performance and features. Below is an explanation of these features and performance indications.



Anti-Ligature

Products which adhere to the UK Ministry of Justice standards required for 'Safer Cell' (STD/E/SPEC/022) when installed correctly, providing very high levels of protection against self-harm or suicide attempts for service users.



Ligature Resistant

Products which adhere to the UK Ministry of Justice standards required for 'Standard Cell' (STD/E/SPEC/021) when installed correctly, providing high levels of protection against self-harm or suicide attempts for service users.



Vandal Resistant

Products which are between IK10 and IK13 on our extrapolated impact test criteria are classed as 'vandal resistant'. This means they have good impact resistance to the lens and body of the product and can withstand intermittent or occasional attack.



Anti-Vandal

Products which exceed IK14 on our extrapolated impact test criteria are classed as 'anti-vandal'. This means they have excellent impact resistance to the lens and body of the product and can withstand prolonged or persistent attack.



IK Rating

An international standard unit for classifying the force of impact that electrical enclosures can endure. IEC TR 62696:2011 is the report for lighting specifically. We have extrapolated the ratings beyond IK11 to allow for comparison between higher impact resistant.



IP Rating

IP (Ingress Protection) ratings indicate the level of protection an electrical enclosure provides against intrusion from solid objects (like dust) and liquids (like water), with the first digit representing solid protection and the second digit indicating liquid protection.



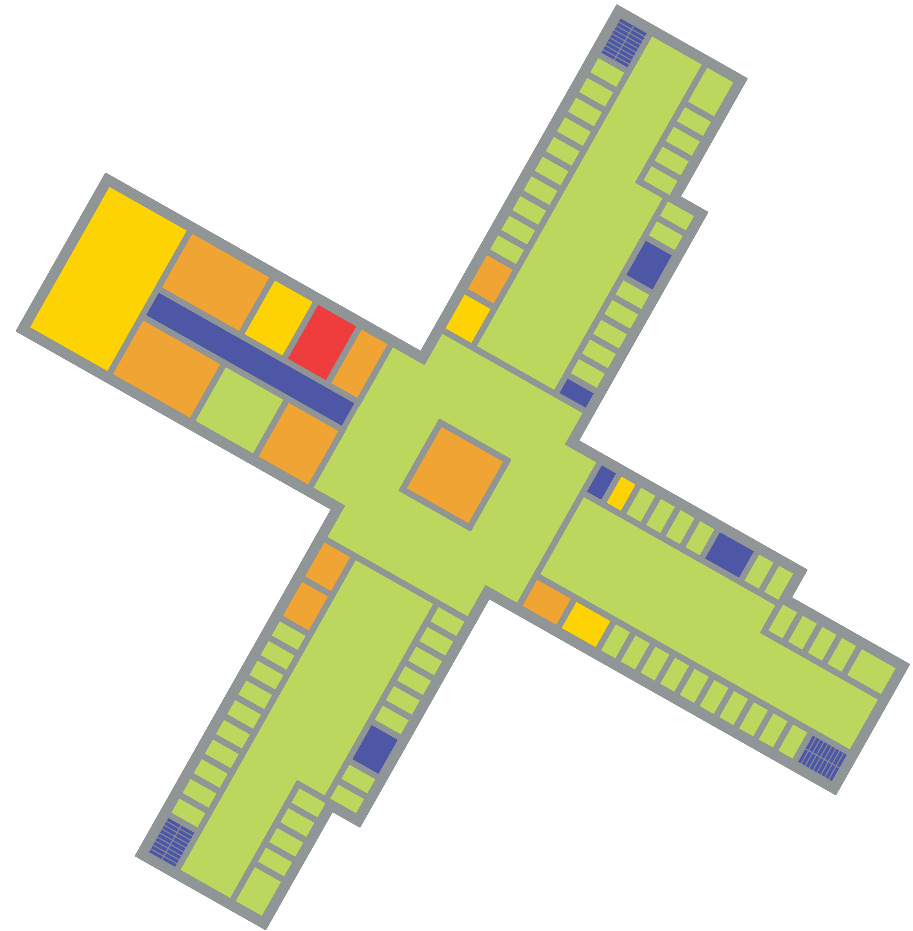
lm/W Rating

Lumens per watt (lm/W) measures the efficiency of a light source, indicating how much visible light (lumens) is produced for each watt of electrical power consumed.

The LUX Guide

Lux (Latin for light) is the measure of the intensity or brightness of light that hits or passes through a surface, as perceived by the human eye. It specifically measures the luminous flux per square metre. One lux is the amount of illumination provided when one lumen is distributed over an area of one square metre.

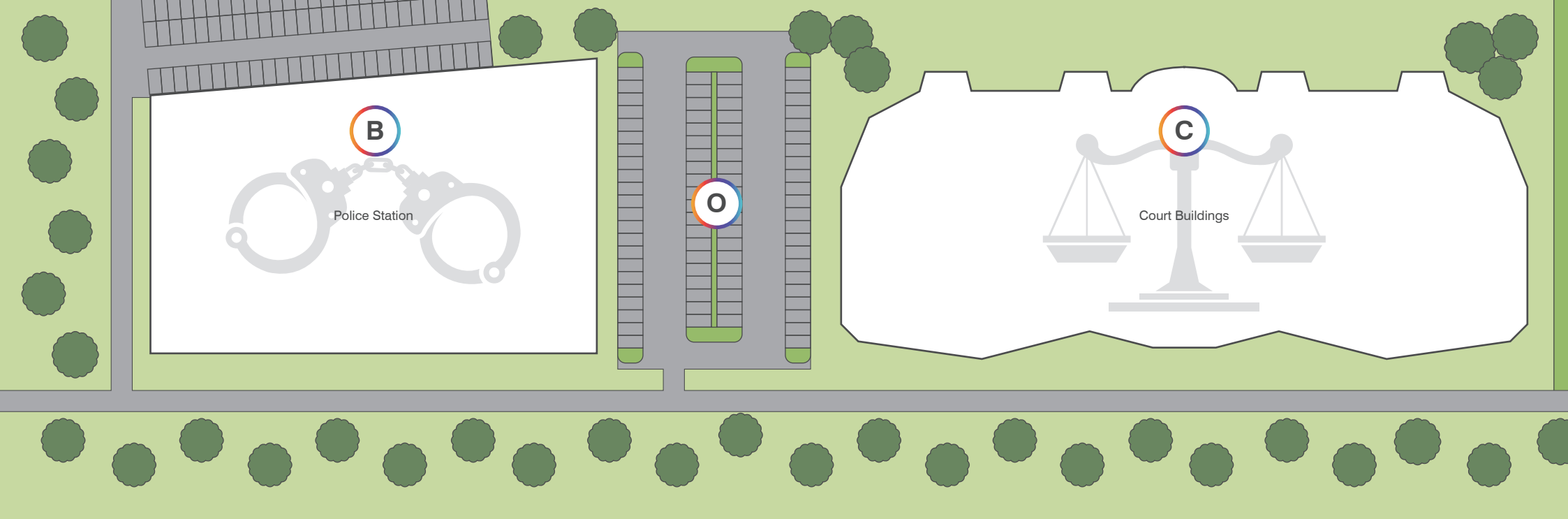
The good practice guide to support rehabilitation to provide a safe, secure and decent prison estate as part of the Prison Estate Transformation Programme, guides the LUX levels in each area of a prison estate.



LUX

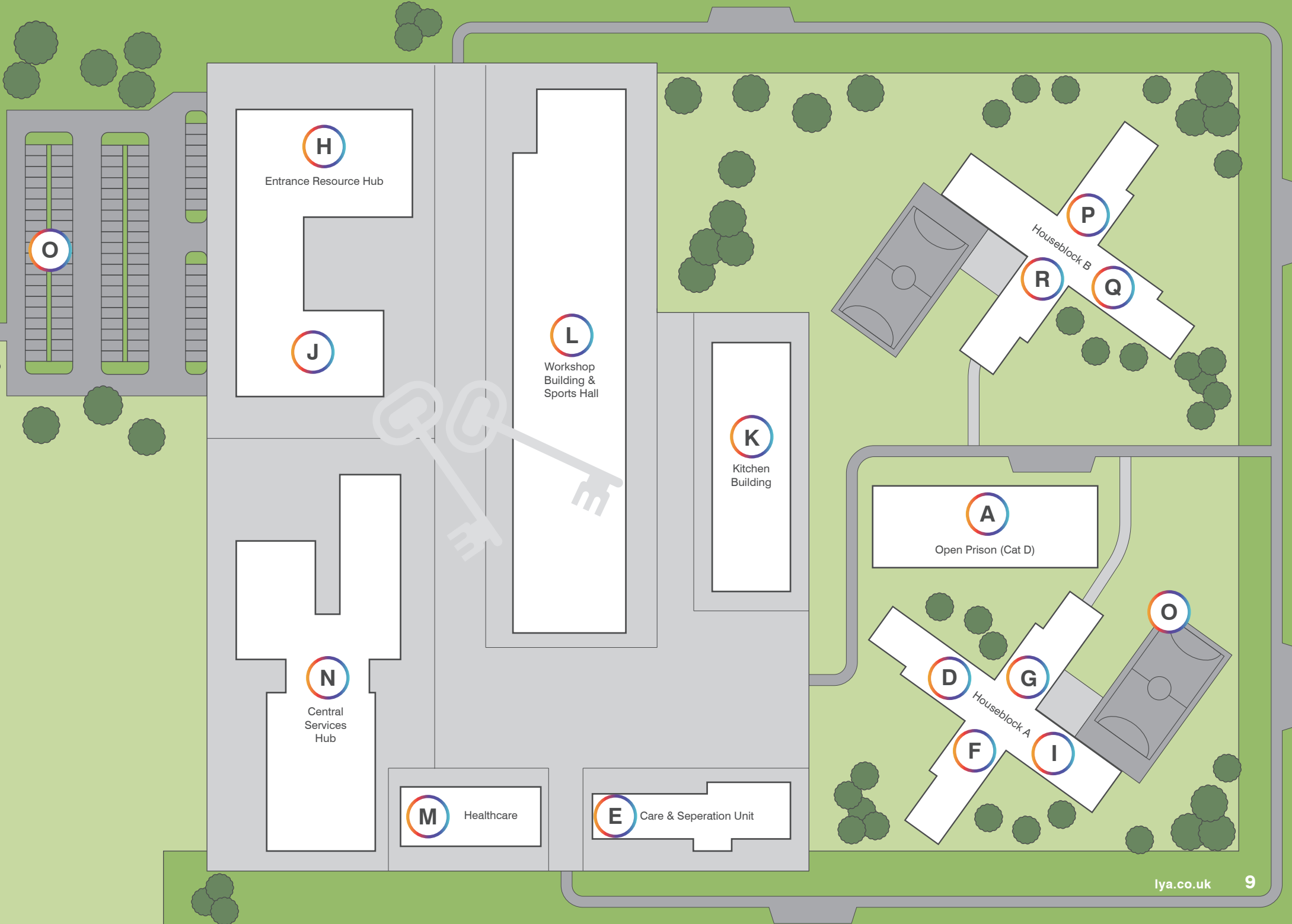
Handy Guide to LUX

Application	Working Height	Uniformity	LUX Level
Ancillary Areas - Plant Rooms	Floor	> 0.4	200 LUX
Communal Areas	Floor	> 0.6	200 LUX
Corridors and Stairwells	Floor	> 0.4	100 LUX
Education	0.75m	> 0.6	400 LUX
Exterior	Floor	minimum of	3, 5 and 10 LUX
Healthcare	0.75m	> 0.6	200 or 325 LUX
Kitchens	0.9m	> 0.6	325 LUX
Multi Faith	Floor	> 0.6	200 LUX
Non-Custody - Offices	0.75m	> 0.6	325 LUX
Reception	Floor	> 0.6	325 LUX
Safer Cells	1.5m	> 0.5	200 LUX
Showers	Floor	> 0.6	100 LUX
Sports Hall	Floor	> 0.7	400 LUX
Standard Cells	1.5m	> 0.5	200 LUX
Toilets	Floor	> 0.4	100 LUX
Video Conference	0.75m	> 0.8	500 LUX
Visitor Centre	Floor	> 0.6	325 LUX
Workshops	0.9m	> 0.6	300 or 325 LUX
Emergency Lighting	Floor	minimum of	1, 3 and 15 LUX



Site Plan of Applications

A	Open Prisons (Cat D)	Page 10	J	Multi Faith	Page 24
B	Police Station	Page 12	K	Kitchens	Page 25
C	Court Buildings	Page 14	L	Workshops/Sports Halls	Page 26
D	Standard Cells	Page 16	M	Healthcare	Page 27
E	Safer Cells	Page 18	N	Ancillary Areas/Non-Custody	Page 28
F	Communal Areas, Corridors and Stairwells	Page 20	O	Exterior	Page 29
G	Showers/Toilets	Page 21	P	Emergency Lighting	Page 30
H	Video Conference/Reception and Visitor Centre	Page 22	Q	Lighting Controls	Page 31
I	Education	Page 23	R	LED Retrofit Upgrades	Page 32



H

Entrance Resource Hub

J

L

Workshop Building & Sports Hall

K

Kitchen Building

A

Open Prison (Cat D)

N

Central Services Hub

M

Healthcare

E

Care & Separation Unit

D

G

F

I

Houseblock A

P

R

Q

Houseblock B

O

O

Open Prisons (Cat D) & Approved Premises



Whilst there is no official guidance for open prisons or approved premises the need for a robust light should still be considered.

Luminaires in these environments must still be 'safe' for service users, as well as being robust, impact resistant and have ligature- resisting features and also stop concealment of non authorised items.

LED lighting is increasingly being recognised as beneficial to the well-being of detainees, and in an open prison environment a more domestic feel to the lighting and lux levels can have a positive impact on levels of anti-social behaviour.

We are happy to recommend, guide and assist with lighting design for these projects.

Attributes

- ✓ Efficient LED – we recommend >95lm/W
- ✓ LED and driver life >50,000 hours
- ✓ Recommended CRI >80 and CCT 3000K or 4000K
- ✓ >IK10 (20J)
- ✓ IP54
- ✓ Tamper-resistant screws
- ✓ Easy maintenance for minimum disruption
- ✓ Minimise whole life costs

Recommended Fittings for Cells



L675/975/1275 x W200 x H91mm

Enduralux Linear
IP54, IK15 (125J)



Available diameter recess (overall fascia size):
Ø100mm (150mm), Ø150mm (200mm),
Ø200mm (225mm)

Como Anti-Vandal
IP54, IK11 (50J)



W375 x D160 x H140mm

Readalux Bulkhead
IP54, IK15 (125J)



Ø350mm H120mm

Iris Anti-Vandal
IP65, IK16 (150J)



Custodial

As a leading specialist designer and manufacturer of fully compliant Ministry of Justice custodial lighting we understand the exacting needs of your demanding environment.

Working proactively with all parties from clients to contractors we are pleased to contribute to the successful outcome of HM Prison and Probation Service's (HMPPS) commitment to 'providing a safe, secure and decent prison estate' as part of the Prison Estate Transformation Programme.

Understanding that well-being and rehabilitation are important elements of the custodial experience our safety considerations are balanced with design and development for future needs.

Light Years Ahead (LYA) works with you to ensure that standard and safer-cell lighting does not contribute to abuse or self-harm and that fittings cannot result in burns or other accidents or incidents.



“

The experience we had with Light Years Ahead, especially during the challenging pandemic, was outstanding. Every change that was made throughout the delivery period was met with “how can we” and they did, on time, every time. Being able to trust in their agility contributes to our enduring partnership with them.

Client regarding a major project

”

Police Custody Suites and Non-custodial Areas

LYA luminaires comply with official guidance for police stations, magistrates' courts, crown courts, prisons, immigration centres, holding cells and any buildings that require a detention facility.

We understand luminaires in these environments must be 'safe' for detainees, as well as being robust, having high impact resistance and an anti-ligature design.

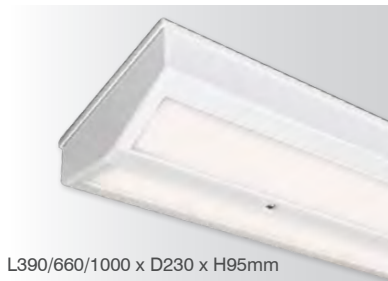
LED lighting is increasingly being recognised as being beneficial to the well-being of detainees, and in a custodial environment, have a positive impact on levels of anti-social behaviour.

Lighting for police custody suites should follow the National Police Estates Group (NPEG) Police Custody Design Guide (STD-Z-DG-078) and we have used this for guidance to lux levels on the next page. Uniformity is important and should generally be >0.6 or higher for task areas.

Attributes

- ✓ Efficient LED - we recommend >95lm/W
- ✓ LED and driver life >50,000 hours
- ✓ Recommended CRI >90 and CCT 4000K
- ✓ >IK11 (50J)
- ✓ IP65
- ✓ Tamper-resistant screws
- ✓ Easy maintenance for minimum disruption
- ✓ Minimise whole life costs

Recommended Fittings for Cells



Guardian Linear
IP65, IK18 (200J)



Protectalux XS Cornice
IP65, IK18 (200J)



Protectalux X Linear
IP65, IK22 (300J)



Protectalux X Bulkhead
IP65, IK22 (300J)



Recommended Fittings for General Areas



L300/600/900/1200/1500 x D173 x H95mm

Resistalux Surface
IP54, IK14 (100J)



600 x 600mm, 300 x 1200mm

Sirius Recessed
IP65, IK14 (100J)



200: \varnothing 225 x H125mm (\varnothing 175-225mm cutout)
150: \varnothing 200 x H80mm (\varnothing 150-175mm cutout)
100: \varnothing 150 x H70mm (\varnothing 100-125mm cutout)

Como Anti-Vandal
IP54, IK11 (50J)



L1250/1525 x D160 x H95mm

Enduralux T Clear
IP65, IK15 (125J)



200: \varnothing 210 x H125mm (\varnothing 175-200mm cutout)
150: \varnothing 160 x H80mm (\varnothing 150mm cutout)
100: \varnothing 110 x H70mm (\varnothing 70mm cutout)

Como Standard
IP54, IK10 (20J)



600 x 600mm, 300 x 600mm, 300 x 1200mm

Asti Recessed Panels
IP40



In addition to these luminaires we can offer fixtures for other custodial and non-custody areas from our extensive range.

Police Custody Suite - Handy Guide to LUX

Application	LUX Level
Breathalyser Room	300 LUX
Cells - Cleaning/Inspection	300 to 450 LUX
Cells - Daytime	150 to 250 LUX
Cells - Night Inspection	minimum 15 LUX
Charge Room (Dimmable)	300 LUX
Charge Room Desk Floor	450 LUX
Corridor - Custody	150 to 250 LUX
Corridor - Non-custody	100 LUX
External Walkways	7 LUX
Holding Rooms	150 to 250 LUX
Interview Rooms / Closed Visits	300 LUX
Medical Room	350 to 450 LUX
Offices	300 LUX
Photo / Fingerprint Area	350 to 500 LUX
Plant Room	200 LUX
Search Room	350 LUX
Stores	100 LUX
Toilets	100 LUX
Emergency Lighting	1, 3 and 15 LUX

Crown & Magistrate Courts and Non-custodial Areas

LYA luminaires comply with official guidance for magistrates' courts and crown courts, holding cells and any buildings that require a detention facility.

We understand luminaires in these environments must be 'safe' for defendants, as well as being robust, have high impact resistant and be to an anti-ligature design.

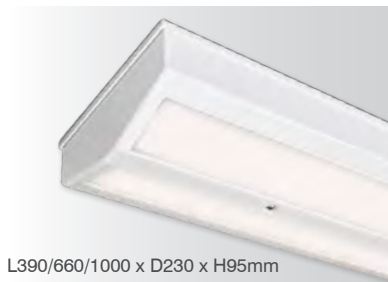
Holding cells in court custody areas should follow the MOJ safer cell standard (STD/E/SPEC/022). We have developed specific luminaires for use in these areas that are easy to install, in new or refurbishment projects, and are available stock or short lead times to minimise disruption.

For court custody areas all rooms and holding cells should be lit to 15 lux in emergency directly below the luminaire.

Attributes

- ✓ Efficient LED – we recommend >95lm/W
- ✓ LED and driver life >50,000 hours
- ✓ Tested to MOJ Standards
- ✓ >IK11 (50J)
- ✓ IP65
- ✓ Tamper-resistant screws
- ✓ Easy maintenance for minimum disruption
- ✓ Minimise whole life costs

Recommended Fittings for Cells



Guardian Linear
IP65, IK18 (200J)



Protectalux XS Cornice
IP65, IK18 (200J)



Protectalux X Linear
IP65, IK22 (300J)



Protectalux X Bulkhead
IP65, IK22 (300J)



Recommended Fittings for General Areas



L700/1000/1300/1500 x D185 x H185mm

Resistalux Cornice
IP54, IK14 (100J)



L1250/1525 x D137 x H137

Protectalux T Cornice
IP65, IK15 (125J)



ø350 x H120mm

Iris Anti-Vandal
IP65, IK16 (150J)



ø350 x H120mm

Iris Standard
IP65, IK10 (20J)



600 x 600mm, 300 x 1200mm

Sirius Recessed
IP65, IK14 (100J)



600 x 600mm, 300 x 600mm, 300 x 1200mm

Asti Recessed Panels
IP40



In addition to these luminaires we can offer fixtures for other custodial and non-custody areas from our extensive range.

Crown & Magistrate Courts - Handy Guide to LUX

Application	LUX Level
Cells	300 LUX
Circulation - Custody	200 LUX
Circulation - Non-Custody	175 to 200 LUX
Custody Areas	300 to 500 LUX
Hearing Rooms/Court Suites	500 LUX
Lounges/Library	350 LUX
Medical Room	500 LUX
Meeting/Interview Rooms	350 to 500 LUX
Offices/Control Rooms	350 to 500 LUX
Plant Room	200 LUX
Private Spaces	350 LUX
Reception	300 LUX
Refreshment Areas	500 LUX
Storage Areas	200 LUX
Task-Based	500 LUX
Toilets/Changing Rooms	125 to 175 LUX
Waiting Areas	300 LUX
Wellbeing/Contemplation	300 LUX
Emergency Lighting	1, 3 and 15 LUX

Standard Cells



Our independently tested luminaires for standard cells are designed and manufactured on site at our dedicated plant in East Anglia and are approved by HMPPS to STD/E/SPEC/021. They are available in a variety of sizes and can be ceiling or wall mounted.

All fittings are vandal-resistant with reduced-ligature properties and manufactured and tested to BS EN 60598. For wet areas fittings must be a minimum IP54 rating or for high traffic areas consider IP65.

Prior to independent testing our in-house testing goes beyond the recommended IK10 20 joules.

Independent tests ensure that it is not readily possible to attach a ligature using a standard shoelace, string, or strip of

bed-sheet material, or to create anchor points using wire or large metal paper clip that would assist in attachment of those materials. The test is repeated during impact testing and utilising a 20kg weight.

The flammability and puncture test utilises a disposable cigarette lighter or matches to apply heat to a single point on the diffuser for 30-seconds. Followed by an attempt to puncture the diffuser with a plastic pen or pencil which is continued for up to eight minutes along with the application of abrasion using a 10mm coach bolt.

For impact testing implements such as the heel of a boot, a broom handle or a metal bed head frame are used with increasing levels of severity to test our material's performance to the required tolerance.

Attributes

- ✓ Efficient LED – we recommend >95lm/W
- ✓ Lamp life >50,000 hours
- ✓ Average light output of 200 lux measured on a level plane at a point 1500mm immediately below its centre
- ✓ >IP40 – we recommend IP54
- ✓ 3000K
- ✓ Tamper resistant screws
- ✓ Night light minimum 10 lux, maximum 15 lux measured at bedhead position
- ✓ Metal body
- ✓ Polycarbonate opal lens – 50% obscuration
- ✓ White polyester powder coated paint finish with zinc pre-coat
- ✓ Shower niche 150 lux

Quality assurance including ISO 9001:2015 and ISO 14001:2015, reduced lead times and an improved competitive position.

Products



Enduralux X Linear IP54, IK16 (150J)

- Reduced ligature linear (975mm or 1275mm)
- Opal polycarbonate lens
- LED 3000K
- Night Light
- Approved with the HMPPS (formerly NOMS) specifications STD/E/SPEC/021
- >95lm/W Part L compliant

975 = L1020 x D237 x H100
1275 = L1320 x D237 x H100



Protectalux XS Cornice IP65, IK18 (200J)

- Anti-ligature cornice system, optional cableway
- Polycarbonate lens
- LED 3000K
- >95lm/W Part L compliant

L700/1000/1300/1500 x D185 x H185mm



Guardian Linear IP65, IK18 (200J)

- Anti-ligature linear fitting
- Dual opal polycarbonate lenses
- LED 3000K
- >105lm/W Part L compliant

L390/660/1000 x D230 x H95mm



Enduralux X Bulkhead IP54, IK14 (100J)

- Reduced Ligature square bulkhead
- Opal polycarbonate lens
- LED 3000K
- Approved with the HMPPS (formerly NOMS) specifications STD/E/SPEC/021
- >95lm/W Part L compliant
- Smaller version and Wifi Access Point cover available

L362 x D362 x H121mm



Safer Cells



Our independently tested anti-ligature, vandal-resistant luminaires for safer cells are designed and manufactured on site at our dedicated plant in East Anglia and are approved by HMPPS to STD/E/SPEC/022. They are available in a variety of sizes and the following mountings:

- Centre mounted cell luminaires for fixing to flat or vaulted ceilings
- Cornice luminaires incorporating spare wire-ways
- Ceiling or wall mounted luminaires for cell toilet recesses and bedhead applications

Prior to independent testing our in-house testing goes beyond the recommended IK10 20 joules.

Independent tests ensure that it is not readily possible to attach a ligature using a standard shoelace or string or to create anchor points using wire or large metal paper clip that would assist in attachment of those materials. The test is repeated during impact testing and utilising a 20kg weight.

The flammability and puncture test utilises a disposable cigarette lighter or matches to apply heat to a single point on the diffuser for 90-seconds. Followed by a 30-second attempt to puncture the diffuser with a coach bolt (M10x150mm) along with the application of abrasion using a 10mm coach bolt. The process of applying heat and attempting to puncture the diffuser is repeated for up to eight minutes.

For impact testing implements such as the heel of a boot or steel toecap, a broom handle or a metal bed head frame are used with increasing levels of severity to test our material's performance to the required tolerance.

Attributes

- ✓ Independently tested and approved by HMPPS (MoJ) – to STD/E/SPEC/022
- ✓ Vandal resistant
- ✓ Ligature free
- ✓ Manufactured and tested to BS EN 60598
- ✓ LED we recommend >95lm/W
- ✓ Life greater than >50,000 hours
- ✓ Average light output of 200 lux
- ✓ We recommend IP65
- ✓ 3000K
- ✓ Tamper resistant screws
- ✓ Nightlight min 10 lux, maximum 15 lux measure at bed head position
- ✓ Body – metal
- ✓ Lens – polycarbonate opal, LEDs should not be seen (50% obscurity)
- ✓ White polyester finish with zinc pre-coat
- ✓ Shower niche 150 lux

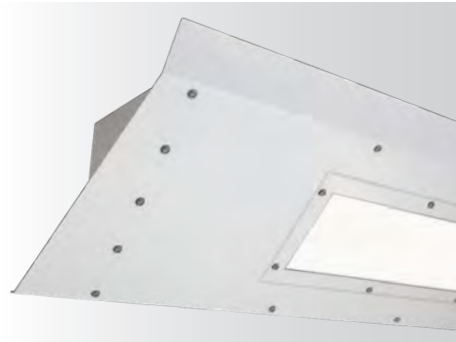
Products



Protectalux X Linear IP65, IK22 (300J)

- Ligature free linear (815mm or 1415mm)
- Polycarbonate lens
- LED 3000K
- Night Light
- Approved with the HMPPS (formerly NOMS) specifications STD/E/SPEC/022
- >95lm/W Part L compliant

815 = L960 x D534 x H161mm
1415 = L1550 x D534 x H161mm



Protectalux X Cornice IP65, IK18 (200J)

- Ligature free Cornice system with optional cableway
- Polycarbonate lens
- LED 3000K
- Night Light
- >95lm/W Part L compliant

1795 = L1795 x D288 x H236mm
LH = L1157 x D288 x H236mm
RH = L1157 x D288 x H236mm



Guardian Linear IP65, IK18 (200J)

- Anti-ligature linear fitting
- Dual polycarbonate lenses
- LED 3000K
- >105lm/W Part L compliant

L390/660/1000 x D230 x H95mm



Protectalux X Bulkhead IP65, IK22 (300J)

- Ligature free round bulkhead
- Polycarbonate lens
- LED 3000K
- Night Light
- Approved with the HMPPS (formerly NOMS) specifications STD/E/SPEC/022
- >95lm/W Part L compliant

ø460(563 inc. cover band) x H124mm



Communal Areas



The Estates Directorate states that luminaires in any area accessible to prisoners or defendants and any unsupervised areas accessible to prisoner visitors (such as toilets and baby changing facilities) must be -

- ✓ **Vandal resistant** with impact resistance of at least IK10 - We would recommend IK11 (50J) or greater
- ✓ **Tamper resistant exposed fixings** Torx 20 (minimum size) type with mushroom head (i.e. shallow head) and centre pin
- ✓ **IP rating recommended of IP44 or higher.**

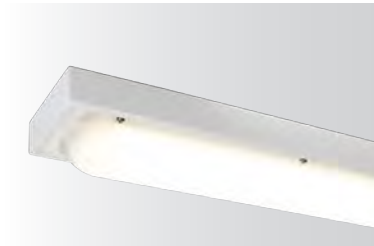
Communal areas such as corridors, stairwells, circulation areas, laundry and drying room, entrance lobbies, serveries, TV, activity & group rooms, stores, holding areas and dining rooms.

Recommended Fittings



L1250/1525 x D137 x H137

Protectalux T Cornice
IP65, IK15 (125J)



L1250/1525 x D160 x H95mm

Enduralux T
IP65, IK15 (125J)



ø350 x H120mm

Iris Anti-Vandal
IP65, IK16 (150J)



L300 x W300 x H95mm

Enduralux T Square
IP54, IK14 (100J)



L390/660/1000 x D230 x H95mm

Resistalux Surface with Cable Way
IP65, IK18 (200J)



L700/1000/1300/1500 x D185 x H185mm

Resistalux Cornice with Cable Way
IP65, IK18 (200J)



600 x 600mm, 300 x 1200mm

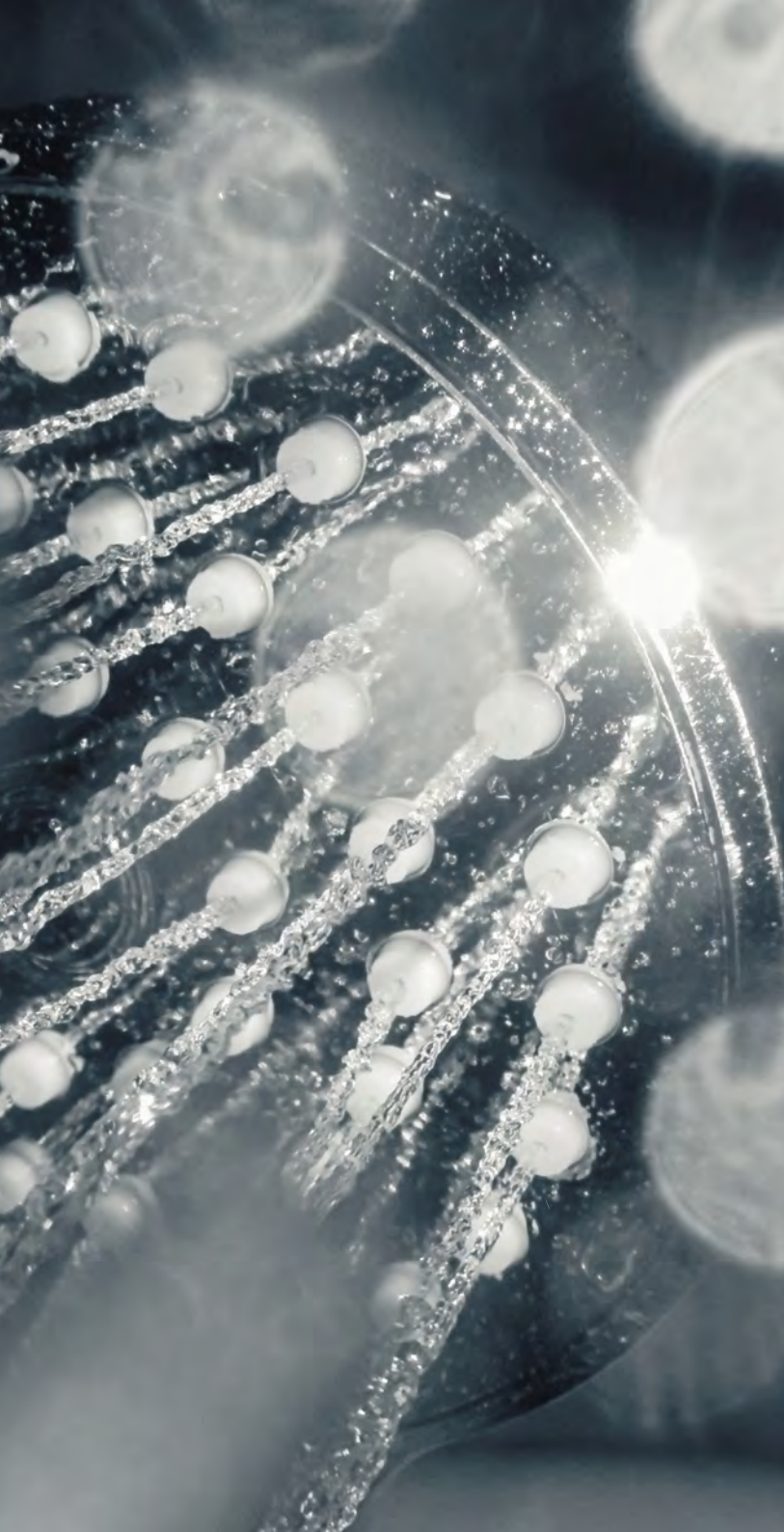
Sirius Surface
IP65, IK14 (100J)



200: ø225 x H125mm (ø175-225mm cutout)
150: ø200 x H80mm (ø150-175mm cutout)
100: ø150 x H70mm (ø100-125mm cutout)

Como Anti-Vandal
IP54, IK11 (50J)





Showers and Toilets



For communal showers and toilets products need to be IP rated and vandal resistant. When they are installed above the shower area the requirement is for IP65 and anti-ligature fittings.

Recommended Fittings



∅470 x H125mm

Iris Anti-Ligature Surface
IP65, IK18 (200J)



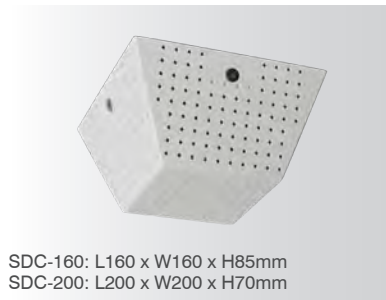
200: ∅250 x H125mm inc. body
150: ∅225 x H80mm inc. body
100: ∅175 x H70mm inc. body

Como Anti-Ligature Downlight
IP65, IK14 (100J)



150 - 600mm, in 50mm size increments
Also available as a framed version

Ventilation Grille
>IK11 (>50J)



SDC-160: L160 x W160 x H85mm
SDC-200: L200 x W200 x H70mm

Smoke Detector Cover
>IK11 (>50J)



Video Conference and Reception Visitor Centre

Congruent with HMPPS good practice guidelines to support rehabilitation, good quality visits in a relaxed environment make a significant contribution to prisoner well-being.

Appropriate lighting plays an important role in creating an environment that encourages family visits, supporting the overall aims of rehabilitation.

For video conferencing visits or court appearances the use of low glare - low flicker and good CCT and CRI is important. A vandal resistant and reduced ligature product is also required.

Video Conference Centre Recommended Fittings



600 x 600mm, 300 x 1200mm

Sirius Recessed Low Glare
IP65, IK14 (100J)



L1250/1525 x D175 x H85

Protectalux T Low Glare Linear
IP65, IK15 (125J)

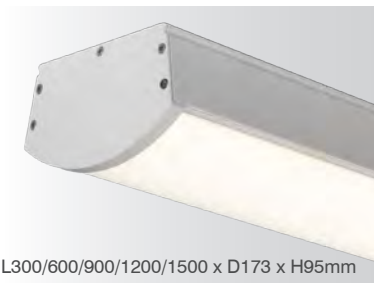


Reception Visitor Centre Recommended Fittings



200: \varnothing 225 x H125mm (\varnothing 175-225mm cutout)
150: \varnothing 200 x H80mm (\varnothing 150-175mm cutout)
100: \varnothing 150 x H70mm (\varnothing 100-125mm cutout)

Como Anti-Vandal
IP54, IK11 (50J)



L300/600/900/1200/1500 x D173 x H95mm

Resistalux Surface
IP54, IK14 (100J)



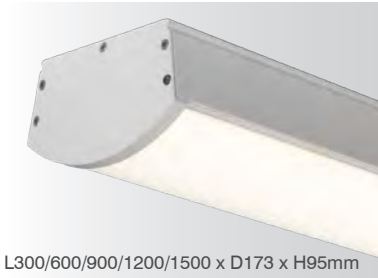


Education Rooms



Education lighting should provide a minimum illumination of 400 lux on the working plane, we recommend reduced glare lighting. Uniformity is important and should be a minimum of 0.6. We also recommend the use of dimming control for certain room use such as music rooms. Presence and daylight sensors should be utilised if natural daylight is available. Emergency lighting should be a minimum of 1 lux.

Recommended Fittings



L300/600/900/1200/1500 x D173 x H95mm

Resistalux Surface
IP54, IK14 (100J)



600 x 600mm, 300 x 1200mm

Sirius Recessed Low Glare
IP65, IK14 (100J)



200: \varnothing 225 x H125mm (\varnothing 175-225mm cutout)
150: \varnothing 200 x H80mm (\varnothing 150-175mm cutout)
100: \varnothing 150 x H70mm (\varnothing 100-125mm cutout)

Como Anti-Vandal
IP54, IK11 (50J)



L1250/1525 x D160 x H95mm

Enduralux T Low Glare
IP65, IK15 (125J)



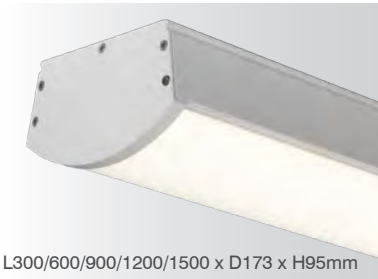


Multi Faith



Multi faith areas should be lit to a minimum of 200 lux, uniformity of 0.6 is acceptable, however, using lighting imaginatively in these areas could add to the overall décor which should be simple, but not merely functional, neutral or bland.

Recommended Fittings



L300/600/900/1200/1500 x D173 x H95mm

Resistalux Surface
IP54, IK14 (100J)



600 x 600mm, 300 x 1200mm

Sirius Surface
IP65, IK14 (100J)



200: \varnothing 225 x H125mm (\varnothing 175-225mm cutout)
150: \varnothing 200 x H80mm (\varnothing 150-175mm cutout)
100: \varnothing 150 x H70mm (\varnothing 100-125mm cutout)

Como Anti-Vandal
IP54, IK11 (50J)



\varnothing 350 x H120mm

Iris Anti-Vandal
IP65, IK16 (150J)



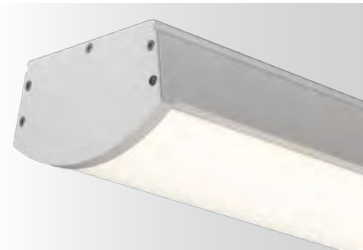


Kitchens



Kitchen lighting is provided to maintain a minimum illumination of 325 lux on the working plane and should be controlled by presence detection. For uniformity we recommend a minimum of 0.6 and, for emergency lighting, the kitchen could be deemed to be high risk so a minimum of 15 lux is required.

Recommended Fittings



L300/600/900/1200/1500 x D173 x H95mm

Resistalux Surface
IP54, IK14 (100J)



600 x 600mm, 300 x 1200mm

Sirius Surface
IP65, IK14 (100J)



L1250/1525 x D175 x H85

**Protectalux T -
Stainless Steel**
IP65, IK10 (20J)



L1250/1525 x D160 x H95mm

Enduralux T Low Glare
IP65, IK15 (125J)





Workshops and Sports Halls

For indoor recreation and skills development this range provides high quality impact-resistant luminaires that require minimal maintenance.

Workshops Recommended Fittings



L1250/1525 x D160 x H95mm

Enduralux T Low Glare
IP65, IK15 (125J)



200: \varnothing 225 x H125mm (\varnothing 175-225mm cutout)
150: \varnothing 200 x H80mm (\varnothing 150-175mm cutout)
100: \varnothing 150 x H70mm (\varnothing 100-125mm cutout)

Como Anti-Vandal
IP54, IK11 (50J)



Sports Halls Recommended Fittings



L1200 x D175 x H80mm

Resistalux High Bay
IP65, IK11 (50J)



\varnothing 770 x H640mm

Capri High Bay
IP65, IK10 (20J)

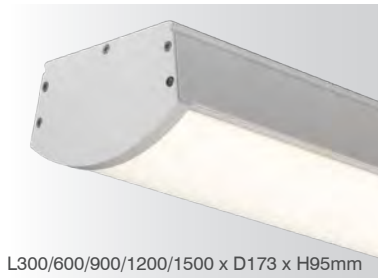


Healthcare



Lighting in a custodial healthcare environment needs to be robust for all the reasons in other areas of the prison but also aid with recuperation and enable clinicians to be able to carry out examinations and tasks as they would in a normal hospital environment, 200 lux is generally recommended with 325 lux for task lighting, the pharmacy, dental surgery, consulting and examination rooms.

Recommended Fittings



L300/600/900/1200/1500 x D173 x H95mm

Resistalux Surface
IP54, IK14 (100J)



ø365 x H95mm

Lucca Anti-Ligature 350
IP65, IK20 (250J)



200: ø250 x H125mm inc. body
150: ø225 x H80mm inc. body
100: ø175 x H70mm inc. body

**Como Anti-Ligature
Downlight**
IP65, IK14 (100J)



Iris AL Surface ø470 x H125mm
Iris AL Semi-R. ø400 x H75mm (125 inc. body)

**Iris Anti-Ligature Surface /
Semi-Recessed**
IP65, IK18 (200J)



Ancillary and Non-Custody Areas



Lighting in other areas is equally important, and requires the following considerations:

Offices	Plant rooms & other back of house areas (especially in emergency mode)
<ul style="list-style-type: none"> • Good quality uniform lux levels 	<ul style="list-style-type: none"> • Minimum maintenance
<ul style="list-style-type: none"> • Low glare (UGR<19) 	<ul style="list-style-type: none"> • IP ratings
<ul style="list-style-type: none"> • Reduced maintenance 	<ul style="list-style-type: none"> • Elevated and low temperatures

Offices and other staff areas require good lighting to assist with daily tasks and the well-being of all those employed across the site.

Recommended Fittings



250: ø250 x H90mm
350: ø350 x H120mm

Lucca Surface
IP40



600 x 600mm, 300 x 600mm, 300 x 1200mm

Asti Recessed Panels
IP40



L564/1128/1410/1692 x W68 x H110mm

Infiniti
IP40



200: ø210 x H125mm (ø175-200mm cutout)
150: ø160 x H80mm (ø150mm cutout)
100: ø110 x H70mm (ø70mm cutout)

Como Standard
IP54, IK10 (20J)



ø350 x H120mm

Iris Standard
IP65, IK10 (20J)



L1200 x W75 x H75mm

Non-Corrosive Range
IP65, IK08 (5J)



L1500 x W125 x H80mm

School
IP40, IK08 (5J)



L1220 x W65 x H57mm

Batten
IP20



Exterior

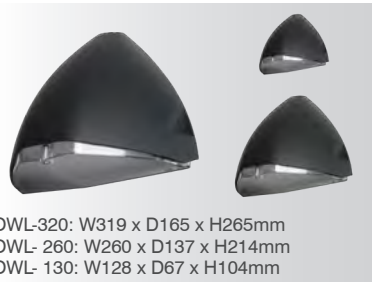


Lighting in exterior applications requires the following considerations:

Exterior areas	
• IP rating	• Minimum maintenance
• Vandal resistance	• UV exposure
• Good optical control to save energy	• Elevated and low temperatures

Exterior lighting is required for the movement and safety of staff and detainees, different prison categories require different lux levels at night.

Recommended Fittings



OWL-320: W319 x D165 x H265mm
 OWL- 260: W260 x D137 x H214mm
 OWL- 130: W128 x D67 x H104mm

OWL Range
 IP65, IK11 (50J)



630/1192/1753 x W135 x H88mm

Roof Light
 IP66, IK10 (20J)



ø350 x D120mm

Iris Exterior
 IP54, IK14 (100J)



ø350 x D125mm

Iris Exterior Hood
 IP54, IK14 (100J)



L375 x W175 x H85mm

Protectalux T Bulkhead
 IP65, IK15 (125J)



L375 x D160 x H140mm

Guardalux Exterior Bulkhead
 IP65, IK15 (125J)



L590 x H134 x W305mm
 (Spigot 60/76mm)

Polaxis Post Top
 IP66, IK08 (5J)



Standard: H980 x ø180mm
 Short: H660 x ø180mm

Mirana Bollard
 IP55, IK10 (20J)



Emergency Lighting



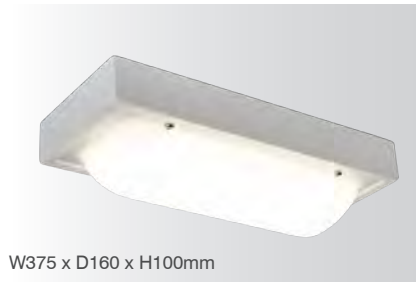
Emergency lighting in custodial settings has higher requirements than usual. All emergency exit routes should be to a minimum of 3 lux (up to 2mt in width) and locked doors/gates should be lit to a minimum of 15 lux vertically. All other areas intended for use by prisoners should be provided with a horizontal illuminance not less than 1 lux on the floor.

Other areas that need to be 15 lux include wing offices and rooms or areas for tasks that are deemed to be high risk. For court custody areas all rooms and cells should be lit to 15 lux in emergency directly below the luminaire.

All of our luminaires come with the option of integral maintained emergency and many have the ability to have a high-output emergency output where required to meet the higher levels needed in the custodial setting, this negates the need for extra emergency fittings.

We can also provide standalone units as integral non-maintained or slave fittings for where a central battery is utilised.

Recommended Fittings



W375 x D160 x H100mm

Guardalux Bulkhead
IP54, IK15 (125J)



W360 x D80 x H180mm

Guardalux Exit Box
IP54, IK11 (50J)



W375 x D160 x H145mm

Guardalux Double-Sided Exit Sign
IP54, IK14 (100J)



W375 x D160 x H160mm

Guardalux Over-Door
IP54, IK15 (125J)



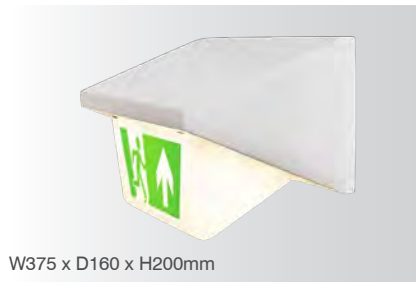
L160 x W160 x H50mm

Guardalux Anti-Ligature Surface Emergency Light
IP54, IK11 (50J)



ø100 x H10mm (50mm cutout)

Guardalux Anti-Ligature Recessed Emergency Light
IP54, IK11 (50J)



W375 x D160 x H200mm

Guardalux Over-Door Exit Sign
IP54, IK14 (100J)



W375 x W127 x H127mm

Guardalux Cornice
IP54, IK15 (125J)



WAY AHEAD

LIGHTING CONTROLS

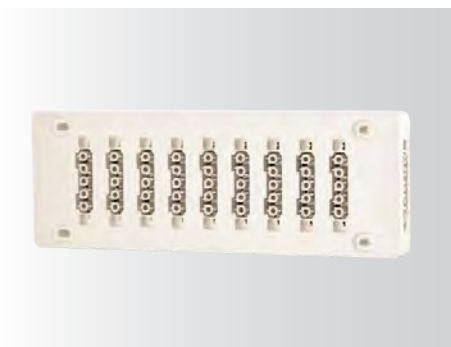
Lighting controls are being increasingly used in custodial settings as a way of saving energy and reducing maintenance costs.

We provide simple daylight dimming, PIRs or integrally fitted microwave sensors for presence or absence detection, all the way through to full DALI or wireless controls and emergency monitoring systems. Please ask us about our Way Ahead lighting control systems.

We also provide a dynamic lighting solution with the ground-breaking MelaGen system that can assist in resetting circadian rhythms and promoting good quality sleep. They can enhance vision, improve health, safety, performance, and well-being in the workplace.



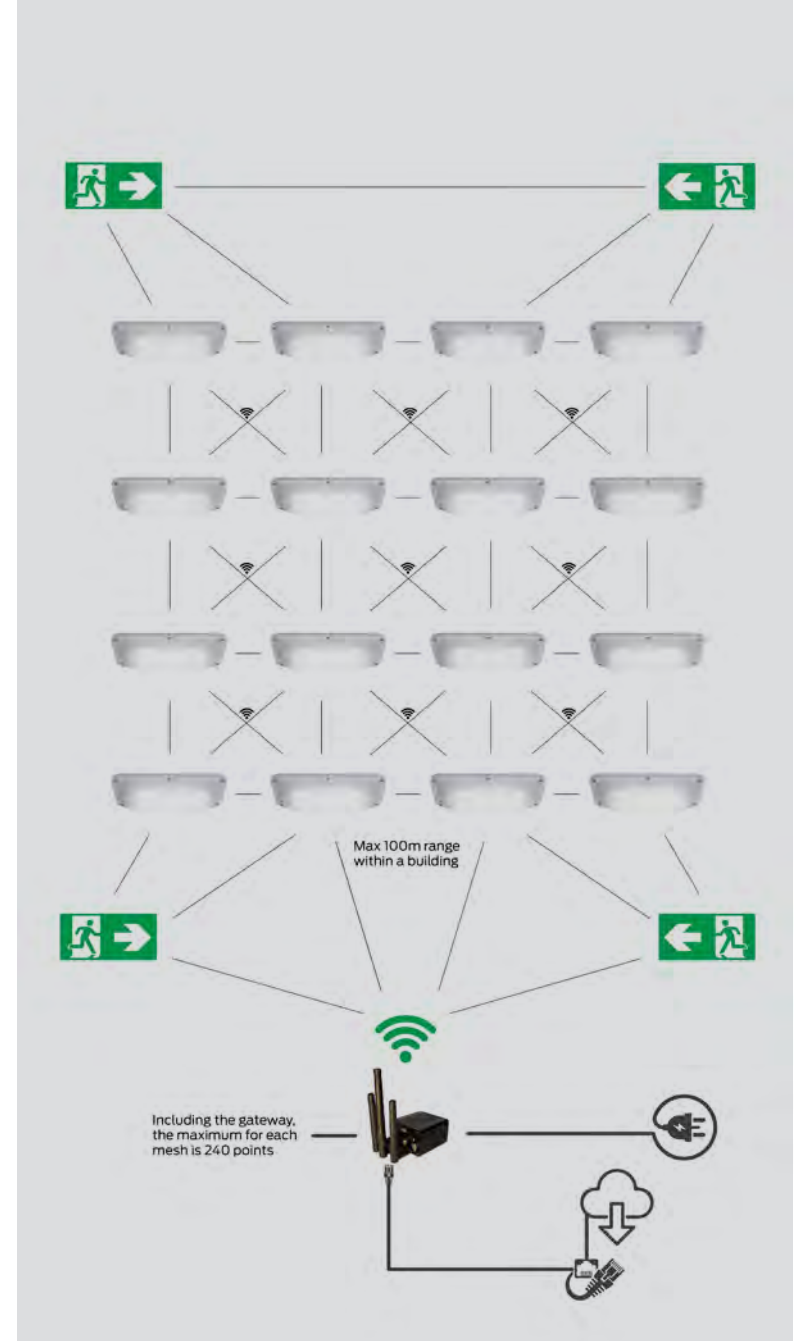
Products



Way Ahead Connect



Way Ahead Sense - Anti-Ligature Recessed PIR Sensor



Way Ahead Mesh

Re:Light & Contribute to the Circular Economy

In the event of product failure, to reduce costly maintenance or to make energy savings you may wish to consider a retrofit of your gear trays to re-purpose over replacing. There are many reasons to choose this option, not least the reduction in the number of required escorts to move service users, time on site to complete the work and damage limitation to existing structures.

In a world and at a time where resources are becoming more precious and amidst rising energy costs, retrofitting contributes to the circular economy and cleaner production, greater length of product service, reduction in product whole life costs, management of product end of life and recycling.

LYA's retrofit gear trays and housings are designed to be accommodated in the current architecture and comply to latest legislation. They are made to meticulous standards and are built to last.

Not only will converting existing lighting architecture to LED technology save on energy expense, it is now prohibited to place new fluorescent lamps on the market for sale.

Get ahead of the ban and Re:Light, before it's too late.



Fluorescent lamps in ring form (T5, T9)



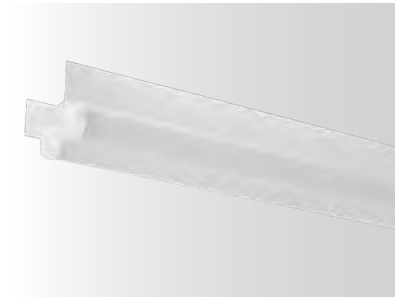
Compact fluorescent lamps with plug-in base (CFLni)



Fluorescent lamps (T5, T8)



Halogen pins (G4, GY6.35, G9)



Retrofit tray for clear lens

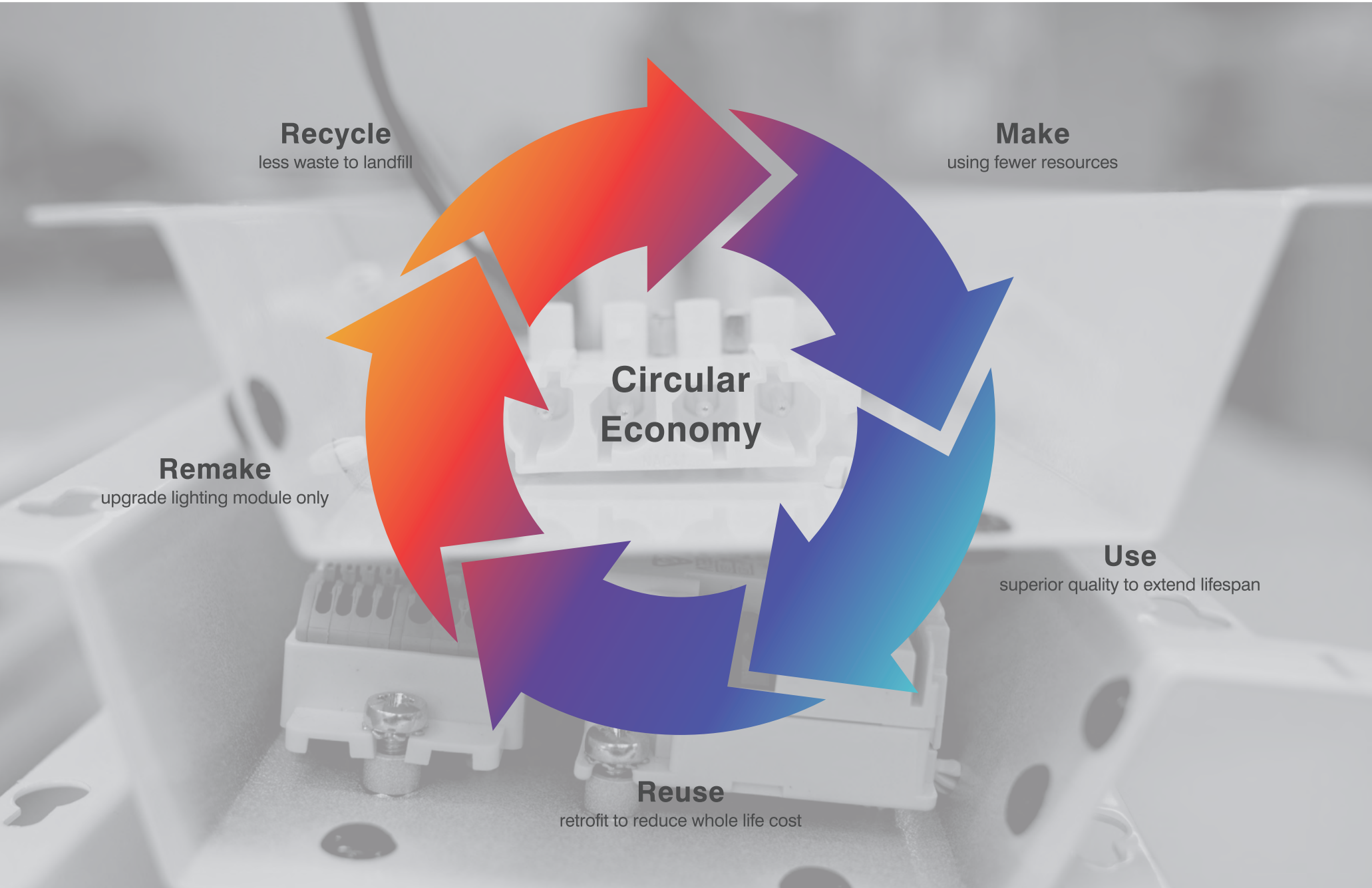


Retrofit tray for opal lens



Retrofit tray and new opal lens

Re:LIGHT **AHEAD**
for the YEARS



Recycle
less waste to landfill

Make
using fewer resources

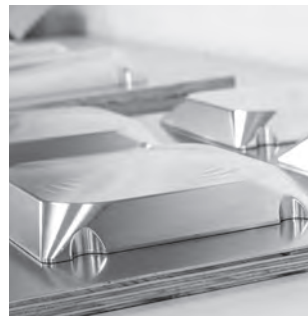
**Circular
Economy**

Remake
upgrade lighting module only

Use
superior quality to extend lifespan

Reuse
retrofit to reduce whole life cost

In-House Manufacture



A man in a dark polo shirt and shorts is working in a factory. He is holding a large, white, multi-compartment plastic mold over a tray containing several smaller, similar molds. The background shows industrial equipment and a blurred factory floor.

**Robust British design,
development,
fabrication and product
assembly services.
Based on strong
foundations of many
decades of expertise.**

LIGHT YEARS AHEAD



+44 (0) 1787 881191

info@lightyearsahead.co.uk

lightyearsahead.co.uk

Church Field Road, Sudbury, Suffolk CO10 2YA

Light Years Ahead is a company registered in England & Wales
registration number 10722911